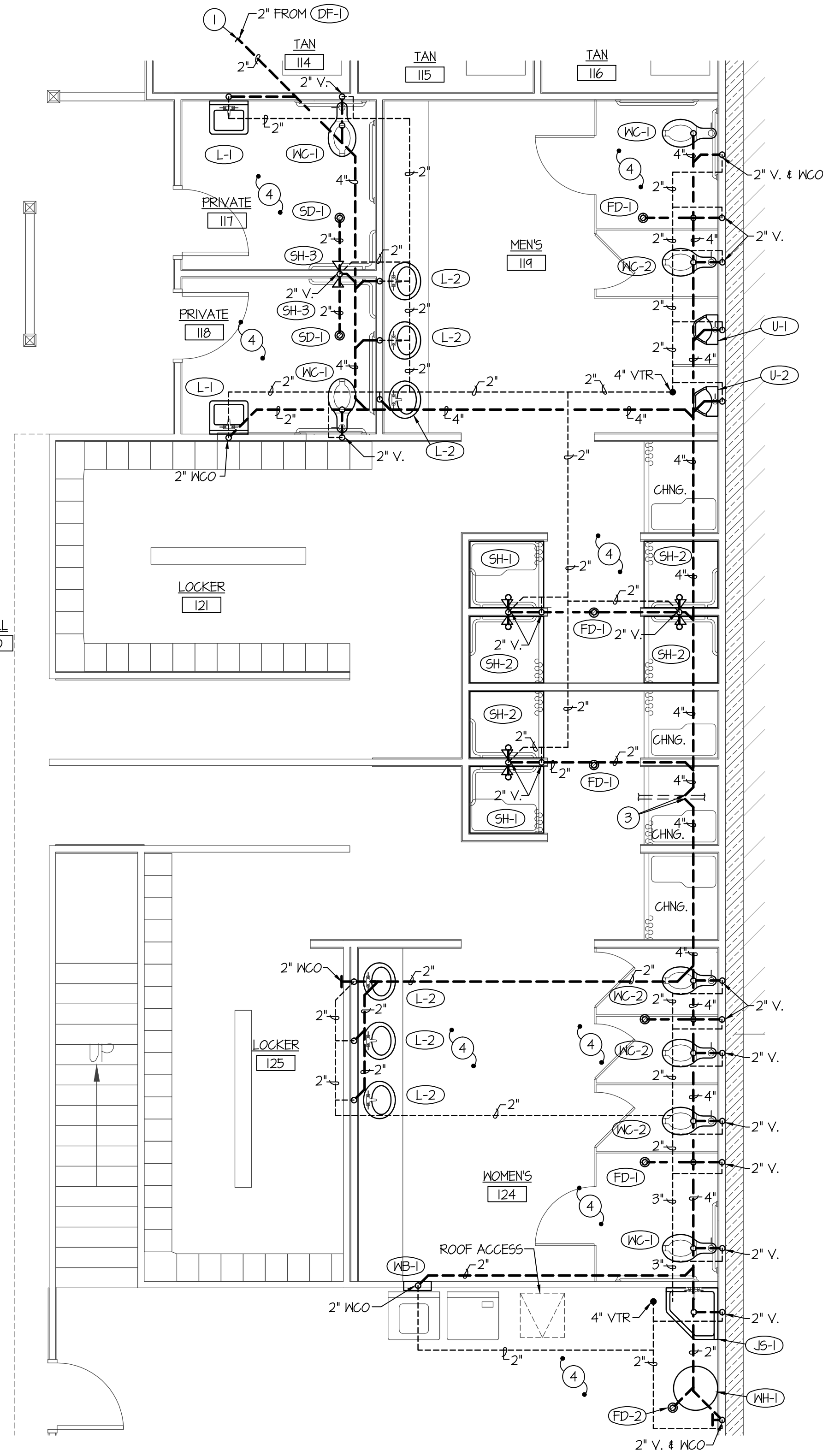


LARGE SCALE LOCKER ROOM WATER & GAS PIPING PLAN
 SCALE: 1/4" = 1'-0" 



LARGE SCALE LOCKER ROOM WASTE & VENT PIPING PLAN
 SCALE: 1/4" = 1'-0" 

PLAN NOTES:

- 1 SEE PLUMBING FLOOR PLAN ON SHEET P1.1 FOR CONTINUATION OF PIPING.
- 2 INSTALL ISOLATION BALL VALVE ON CM MAIN SERVING EACH LOCKER ROOM IN ACCESSIBLE LOCATION.
- 3 CONNECT NEW 4" WASTE TO EXISTING 4" OR LARGER WASTE LINE BELOW SLAB. FIELD VERIFY FLOW AND ELEVATION OF EXISTING WASTE LINE.
- 4 REFER TO ARCHITECTS PLANS FOR SANCUTTING AND PATCHING OF CONCRETE SLAB FOR INSTALLATION OF NEW WASTE, VENT AND WATER PIPING.
- 5 RISE (2) 3" WATER HEATER FLUES UP THRU ROOF TO VERTICAL VENT TERMINATION ASSEMBLY. SEAL ROOF PENETRATION WEATHERTIGHT. SEE WATER HEATER DETAIL ON SHEET P2.0
- 6 INSTALL 10 PSI OR OZ. REGULATOR SIZED FOR BTU LOAD OF ACTUAL WATER HEATER SUPPLIED ON 3/4" GAS LINE ON ROOF. DROP 3/4" (OZ.) GAS LINE DOWN THRU ROOF TO SERVE WATER HEATER WH-1 BELOW (SEAL ROOF PENETRATION WEATHERTIGHT). INSTALL SHUT-OFF VALVE, DIRT LEG AND FLEXIBLE CONNECTION ON 3/4" (OZ.) GAS LINE CONNECTING TO HEATER. SEE DETAIL ON SHEET P2.0

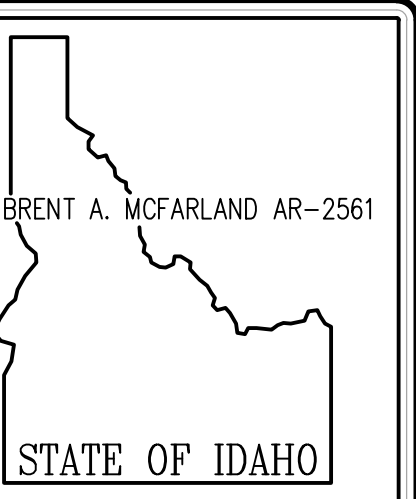
GENERAL NOTES:

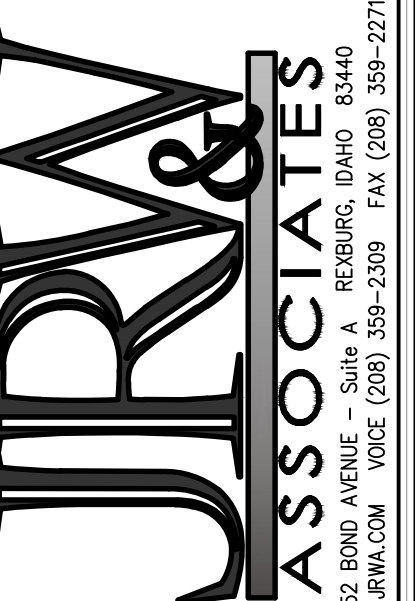
- A- THE CONTRACTOR SHALL CHECK AND VERIFY ALL DIMENSIONS AND CONNECTIONS ON THE JOB SITE. ALL WORK SHALL BE EXECUTED FROM MEASUREMENTS TAKEN AT THE SITE.
- B- THE MECHANICAL CONTRACTOR SHALL BE RESPONSIBLE TO INSURE PROPER CODE CLEARANCES FOR ELECTRICAL AND MECHANICAL ACCESS WHEN INSTALLING ANY EQUIPMENT SUPPLIED BY THE MECHANICAL CONTRACTOR.
- C- IT IS CRITICAL THAT THIS CONTRACTOR COORDINATE EQUIPMENT LOCATIONS WITH PIPING, DUCTWORK, ELECTRICAL CONDUIT AND BUILDING STRUCTURE TO INSURE CODE COMPLIANCE.
- D- CEILING DIFFUSERS ARE SHOWN IN APPROXIMATE LOCATIONS. REFER TO LIGHTING PLANS AND REFLECTED CEILING PLAN FOR EXACT LOCATIONS.
- E- DUCT DIMENSIONS CALLED OUT ON DRAWINGS ARE INSIDE FREE AREA DIMENSIONS. ACOUSTICAL DUCT LINER ARE TO BE ADDED TO OVERALL MEASUREMENTS.
- F- ALL DUCTWORK AND PIPING WHICH PASSES THRU FIRE RATED WALLS TO BE FIRE STOPPED WITH APPROVED FOAM OR SEALANT. REFER TO SPECIFICATIONS FOR APPROVED MANUFACTURERS.

ORIGINAL DRAWING SIGNED BY: DWAYNE C. SUDMEKES
 DATE ORIGINAL SIGNED: Oct 03, 2018
 ORIGINAL ON FILE AT ENGINEERED SYSTEMS ASSOCIATES
 1355 EAST CENTER, POCATELLO, IDAHO 83201

PROFESSIONAL ENGINEER
 REGISTERED
 5762
 STATE OF IDAHO
 DWAYNE C. SUDMEKES

Engineered Systems Associates
 1355 EAST CENTER
 POCATELLO, IDAHO 83201
 PHONE: (208) 233-0501
 FAX: (208) 233-0529
 EMAIL: esa@engsystems.com
 ESA JOB NUMBER: 18061



BRENT A. MCFARLAND AR-2561
 STATE OF IDAHO

 1152 BOND AVENUE - Suite A REBURG, IDAHO 83440
 WWW.JRW.COM (VOICE) 359-2309 FAX (208) 359-2271

CONSULTANTS:
 MECHANICAL ENGINEERING
 ENGINEERED SYSTEMS ASSOC.
 1355 East Center
 Pocatello, Idaho 83201
 (208) 233-0501
 Fax (801) 233-0529
 ELECTRICAL ENGINEERING
 PAYNE ENGINEERING INC.
 1823 E. Center St.
 Pocatello, Idaho 83201
 (208) 232-4439
 Fax (208) 232-1435

PROJECT: WORLD GYM REMODEL IDAHO FALLS, IDAHO
 DRAWING TITLE: LARGE SCALE PLUMBING PLANS

#	DATE	COMMENT

REVISION:
 DRAWN BY: SR JOB NO: 756
 CHECKED BY: DCS DATE: OCT. '18
 PLOT DATE: 09-26-18

DRAWING NO. 18061 P1.2.dwg
P1.2
 OF -